

**CROC  
MATE**



# CROC CRETE

**EASILY CLEAR PIPES OF UNWANTED  
CONCRETE, MORTAR, TILER'S GROUT,  
FLOOR LEVELLING COMPOUND, BEDDING  
AND CEMENT-BASED PRODUCTS.**



Available in: 5L, 10L, 20L, larger quantities available on request.

## HOW IT WORKS

Croc Crete is an industrial strength, acid based product for dissolving thick build ups of cement-based products. Our formula penetrates deep inside concrete residues and reacts from within. The solution only attacks the Portland Cement component of the grout, cement or concrete products, reducing the materials to sand and gravel.

For higher MPA concrete, floor levelers and tile grout, Croc Crete Ultra will strip through these tough unwanted blockages.

## SAFE TO USE ON

- |              |                                      |
|--------------|--------------------------------------|
| ✓ PVC        | ✓ Copper                             |
| ✓ Clay       | ✓ Cast Iron                          |
| ✓ Rubber     | ✓ Steel Pipe                         |
| ✓ Glass      | (including stainless and galvanised) |
| ✓ Fibreglass |                                      |

## SIMPLE TO USE

Always test a small area prior to application.

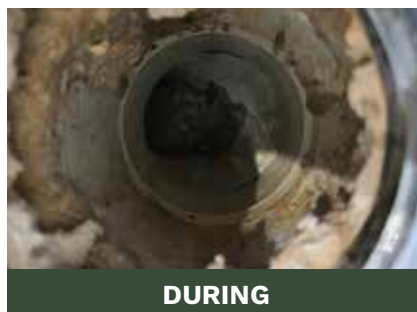
1. Ensure the area is dry and clear from water. Completely submerge affected area in Croc Crete solution.
2. Allow to soak, disturbing affected area's surface occasionally for optimal results.
3. Blast thoroughly with water or plug and vacuum.
4. Repeat if necessary, reducing the materials to a soft sludge for easy removal from the drain pipe.

*Disclaimer: This product works best at its strongest concentration; therefore dilution is not recommended. Always wear protective gloves, protective clothing, eye protection, face protection.*

*\* Discolouration may occur in some cases. Always test prior to application.*



**BEFORE**



**DURING**



**AFTER**